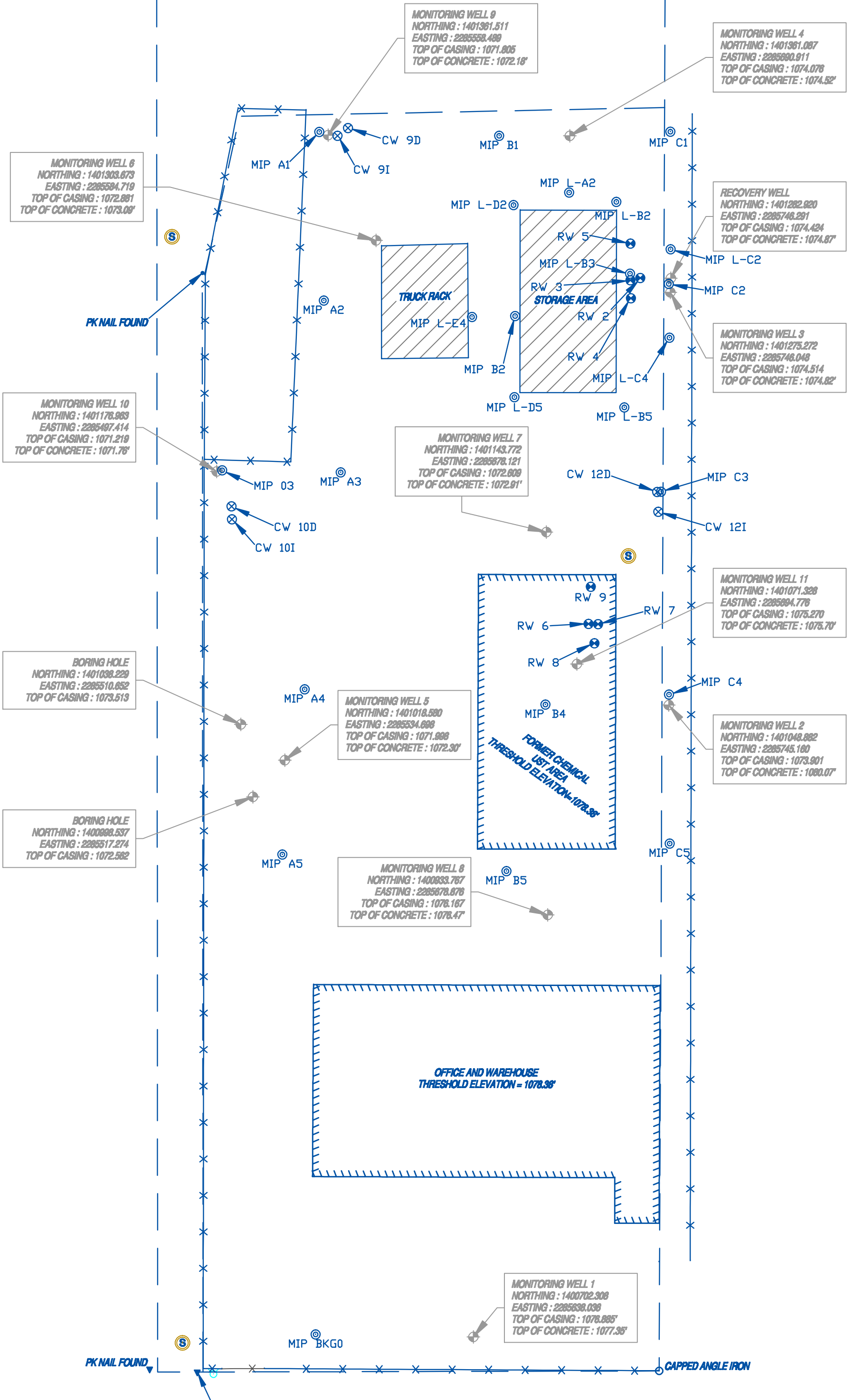


LEGEND



These standard symbols will be found in the drawing.

- IRON PIN FOUND
- FIRE HYDRANT
- MANHOLE
- RECOVERY WELL
- BORING HOLE
- CHEVRON MONITORING WELL
- CW
- MIP
- RW
- FENCE
- APPROXIMATED PROPERTY LINE



MIP LOCATIONS

NORTHING(Y)	EASTING(X)	ELEV(Z)	DESCRIPTION
1401363.178	2285553.551	1071.909	MIP A1
1401270.753	2285556.084	1072.581	MIP A2
1401330.007	2285690.598	1073.997	MIP L-A2
1401176.483	2285565.386	1072.574	MIP A3
1401057.458	2285545.665	1072.384	MIP A4
1400966.896	2285533.349	1071.954	MIP A5
1401361.049	2285652.231	1073.607	MIP B1
1401262.180	2285660.940	1073.515	MIP B2
1401324.871	2285716.490	1074.615	MIP L-B2
1401285.407	2285723.956	1074.055	MIP L-B3
1401049.099	2285677.622	1075.599	MIP B4
1400957.793	2285656.156	1073.660	MIP B5
1401212.130	2285720.872	1074.526	MIP L-B5
1400703.606	2285551.624	1077.214	MIP BKG0
1401363.319	2285746.097	1074.528	MIP C1
1401279.825	2285745.165	1074.467	MIP C2
1401298.782	2285746.239	1074.376	MIP L-C2
1401165.890	2285740.915	1074.499	MIP C3
1401054.664	2285745.379	1074.344	MIP C4
1401250.366	2285745.531	1074.450	MIP L-C4
1400972.869	2285745.637	1074.241	MIP C5
1401323.032	2285660.147	1073.291	MIP L-D2
1401217.687	2285660.616	1073.247	MIP L-D5
1401261.780	2285637.393	1073.610	MIP L-E4
1401177.542	2285500.388	1071.964	MIP O3

RW LOCATIONS

NORTHING(Y)	EASTING(X)	ELEV(Z)	DESCRIPTION
1401281.826	2285724.150	1073.637	RW 2 - TOP OF CASING
1401282.472	2285723.880	1074.043	RW 2 - GROUND SHOT
1401283.063	2285729.598	1073.500	RW 3 - TOP OF CASING
1401283.588	2285729.537	1073.765	RW 3 - GROUND SHOT
1401271.962	2285724.441	1073.709	RW 4 - TOP OF CASING
1401272.247	2285723.694	1074.078	RW 4 - GROUND SHOT
1401301.985	2285724.166	1073.985	RW 5 - TOP OF CASING
1401302.459	2285723.924	1074.209	RW 5 - GROUND SHOT
1401093.338	2285701.174	1075.506	RW 6 - TOP OF CASING
1401093.772	2285700.327	1075.858	RW 6 - GROUND SHOT
1401093.213	2285706.485	1075.561	RW 7 - TOP OF CASING
1401093.613	2285706.417	1075.842	RW 7 - GROUND SHOT
1401082.744	2285704.393	1075.618	RW 8 - TOP OF CASING
1401083.219	2285704.599	1075.865	RW 8 - GROUND SHOT
1401113.744	2285702.453	1075.674	RW 9 - TOP OF CASING
1401114.296	2285702.583	1076.049	RW 9 - GROUND SHOT

CW LOCATIONS

NORTHING(Y)	EASTING(X)	ELEV(Z)	DESCRIPTION
1401365.346	2285569.357	1071.589	CW 9D - TOP OF CASING
1401365.864	2285569.296	1072.057	CW 9D - GROUND SHOT
1401361.124	2285563.575	1071.733	CW 9I - TOP OF CASING
1401361.248	2285563.279	1072.088	CW 9I - GROUND SHOT
1401157.805	2285505.543	1072.396	CW 10D - TOP OF CASING
1401158.270	2285505.527	1072.709	CW 10D - GROUND SHOT
1401150.723	2285505.699	1072.430	CW 10I - TOP OF CASING
1401150.980	2285506.000	1072.788	CW 10I - GROUND SHOT
1401165.731	2285738.777	1074.154	CW 12D - TOP OF CASING
1401166.057	2285739.042	1074.549	CW 12D - GROUND SHOT
1401154.863	2285739.438	1074.067	CW 12I - TOP OF CASING
1401155.141	2285739.652	1074.444	CW 12I - GROUND SHOT

NOTES

- ELEVATIONS ARE BASED ON NAVD 88 DATUM



155 CLIFTWOOD DRIVE - ATLANTA, GEORGIA 30328 - TELEPHONE: (404) 255-4671 - FAX: (404) 255-6607 - WWW.GEORGIALANDSURVEYING.COM

JOB NUMBER 189858	SURVEY PLAT FOR: #2275 TUCKER INDUSTRIAL ROAD		DATE: 5/10/10	SCALE: 50'	
	JOHN DOE		REVISION	BY DATE	
	LAND LOT: 215	18th DISTRICT	SECTION	DeKALB COUNTY, GA	
	LOT:	BLOCK:	UNIT:	PHASE:	
SUBDIVISION:	DEED BOOK 8436, PAGE 730	SURVEYED:	PARTY CHIEF: D.R.	SHEET 1 OF 1	
PLAT BOOK	PAGE	DRAFTED:	DRAFTER: S.L.	SHEET 1 OF 1	

