

LEGEND

These standard symbols may be found in the drawing.

- 1/2" REBAR SET
- IRON PIN FOUND
- CATCH BASIN
- DRAIN
- FIRE HYDRANT
- WATER METER
- WATER VALVE
- GUY WIRE
- LIGHT POLE
- POWER POLE
- ELECTRIC METER
- MANHOLE
- SEWER CLEAN OUT
- GAS METER
- AIR CONDITIONING UNIT
- SPOT ELEVATION
- HARDWOOD
- PINE TREES
- SS — SS — SANITARY SEWER
- SS — SS — SANITARY SEWER (NOT FIELD LOCATED)
- E — E — ELECTRIC
- — SILT FENCE
- — TREE FENCE
- — FENCE
- — UNDERGROUND PIPELINE
- — PROPOSED

- TREE LIST**
 TOTAL TREES = 10
 TOTAL INCHES = 162"
- TREES SAVED WITH ZERO IMPACT**
 (TREE DATA INCLUDED IN TREE REQUIREMENT CALCULATIONS)
 (1) 26" HARDWOOD [7.4 UNITS]
 (1) 14" HARDWOOD [4.0 UNITS]
 (1) 10" HARDWOOD [3.2 UNITS]
 (3) 6" HARDWOODS [4.8 UNITS]
- TOTAL TREES = 6
 TOTAL INCHES = 68"
 TOTAL UNITS = 19.4
- TREES SAVED WITH IMPACT**
 (TREE DATA EXCLUDED FROM TREE REQUIREMENT CALCULATIONS)
 (2) 30" HARDWOOD
 (1) 24" HARDWOOD
- TOTAL TREES = 3
 TOTAL INCHES = 84"
- LOST TREES**
 (1) 10" HARDWOOD
- TOTAL TREES = 1
 TOTAL INCHES = 10"
- TREE REQUIREMENT CALCULATIONS**
 1) 25% OF 11 = 2.75 TREES REQUIRED
 OR
 120" X 0.521 ACRES = 62.52" REQUIRED
- 2) 15 UNITS X 0.521 ACRES = 7.815 UNITS REQUIRED
- 1) 6 TREES TO REMAIN ON-SITE (REQUIREMENT SATISFIED)
 OR
 68" TO REMAIN ON-SITE (REQUIREMENT SATISFIED)
- 2) 19.4 UNITS TO REMAIN ON-SITE (REQUIREMENT SATISFIED)

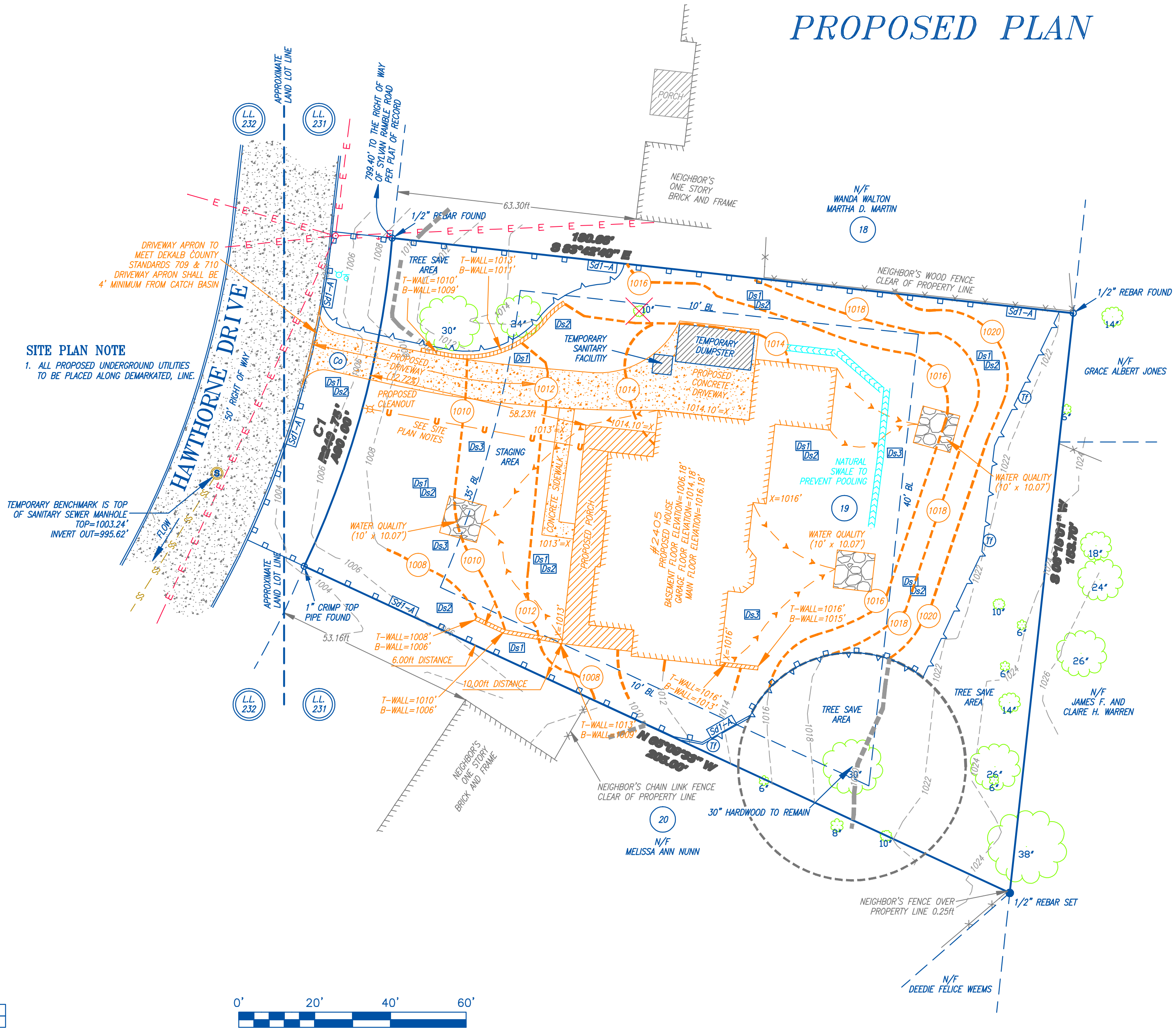
REQUIREMENTS MET

CURVE TABLE

CURVE	RADIUS	ARC LENGTH	CHORD LENGTH	CHORD BEARING	DELTA ANGLE
C1	249.75'	90.00'	89.51'	N 15°01'10" E	20°38'50"

PROPOSED PLAN

AREA
 22682.506 SQ. FT.
 0.521 ACRES



SITE PLAN NOTE
 1. ALL PROPOSED UNDERGROUND UTILITIES TO BE PLACED ALONG DEMARKATED LINE.

TEMPORARY BENCHMARK IS TOP OF SANITARY SEWER MANHOLE. TOP=1003.24' INVERT OUT=995.62'

155 CLIFTWOOD DRIVE - ATLANTA, GEORGIA 30328 - TELEPHONE: (404) 255-4671 - FAX: (404) 255-6607 - WWW.GEORGIALANDSURVEYING.COM

JOB NUMBER 190538	DRAWING NUMBER F-2635	SURVEY PLAT FOR: #2405 HAWTHORNE DRIVE		DATE: 1/13/11	SCALE: 20'		
		JOHN DOE				REVISION	BY
LAND LOT: 231		18th DISTRICT		SECTION		DeKALB COUNTY, GA	
LOT: 19		BLOCK: B		UNIT: TWO		PHASE:	
SUBDIVISION: BRIARMOOR MANOR							
DEED BOOK 16201		PAGE 15		SURVEYED: 1/19/11		PARTY CHIEF: D.R.	
PLAT BOOK 26		PAGE 8		DRAFTED: 1/24/11		DRAFTER: S.L.	
				SHEET 3 OF 3			

